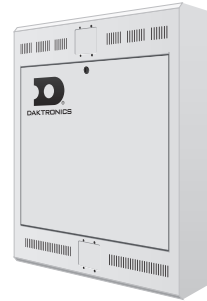


# DAKTRONICS SSN-150 PRODUCT SPECIFICATIONS

Sound Cabinet  
with Team Lettering



Control Enclosure

This Sportsound® standard indoor sound system is specially designed for small indoor gymnasiums. The single-point system is permanently wall-mounted and provides even coverage and levels capable of overcoming crowd noise. Customized graphics or advertisements can be printed on the wraparound front mesh.

	<b>SOUND CABINET</b>	<b>CONTROL ENCLOSURE</b>
<b>DIMENSIONS</b>	8'-0" H x 2'-0" W x 1'-5" D (2438 mm, 610 mm, 432 mm)	2'-6" H x 2'-0.5" W x 8" D (762 mm, 622 mm, 203 mm)
<b>WEIGHT</b>	175 lbs (80 kg)	75 lbs (34 kg)
<b>POWER</b>	(power supplied via control enclosure)	120 VAC, 1300 Watts; one (1) 20 Amp circuit
<b>CONSTRUCTION</b>	Aluminum	Steel
<b>COLOR</b>	Semi-gloss black*	Gray

\* More sound cabinet colors are available for an additional fee.

## KEY FEATURES

- Turnkey audio system – all components integrated and optimized by Daktronics
- Ideal for gymnasiums up to 120' x 120' (37 m x 37 m)
- Durable sound cabinet protects internal speaker components from indoor sport balls
- Separate lockable control enclosure allows for easy service access while keeping components secure
- Built-in overload protection for high frequency devices and peak limiters
- Pre-configured crossover and equalization for ease of setup
- Mid and high frequency speakers adjust +/- 25 degrees horizontally and 5 degrees down vertically
- Full-color-printable front mesh provides space to display identification or generate sponsor revenue
- Compatible with any Daktronics audio control system (see [DD2367302](#))

[WWW.DAKTRONICS.COM](http://WWW.DAKTRONICS.COM) E-MAIL: [SALES@DAKTRONICS.COM](mailto:SALES@DAKTRONICS.COM)

201 Daktronics Drive, PO Box 5128, Brookings, SD 57006  
Phone: 1-800-325-8766 or 605-692-0200 Fax: 605-697-4746  
DD2672221 041719 Page 1 of 4



# DAKTRONICS SSN-150 PRODUCT SPECIFICATIONS

## GRILLE

Woven flame resistant acoustical mesh

## GRILLE COLOR

The cabinet's front mesh grille can be printed in a variety of colors to display advertising, sponsor or logo designs.

## LOGO/SPONSOR PRINTABLE AREA

92.4" H x 44.5" W (2.3 m, 1.1 m)

## FREQUENCY RESPONSE (-10 DB @ 1 M)

35 Hz to 20 kHz

## COVERAGE

Horizontal = 150 degrees; Vertical = 45 degrees

## MAX SPL @ 1 M

120 dB

## MAX SPL @ TYPICAL SEATING AREA

90 dB

## SENSITIVITY (@ 1 M)

93 dB @ 2.83 V, 90 dB @ 2.0 V (70 Hz to 18 kHz)

## DRIVER COMPONENTS

- Sixteen (16) 1" (25 mm) soft dome tweeters
- Eight (8) 5" (125 mm) high-power drivers
- One (1) 12" (305 mm) low frequency driver

## AMPLIFIER

- 4 Channels; 625 W per channel
- Frequency Response: (at 8 ohm, 20 Hz to 20 kHz): +/- 0.5 dB
- Total Harmonic Distortion (at full rated power, 20 Hz to 20 kHz): 1%
- Monitoring and control capabilities
- On-board Digital Signal Processing (DSP)
- IEC Power Connector: 15 A IEC

## FOR ADDITIONAL INFORMATION

- Shop Drawing: DWG-1132106 (attached)
- System Riser Diagram: DWG-1144831 (attached)
- Application Guide: see [DD3830125](#)
- Architectural Specifications: See [DD2775523](#)
- Manual: See [DD2686308](#)

[WWW.DAKTRONICS.COM](http://WWW.DAKTRONICS.COM) E-MAIL: [SALES@DAKTRONICS.COM](mailto:SALES@DAKTRONICS.COM)

*Sportsound® is a trademark of Daktronics, Inc.  
Specifications and pricing are subject to change without notice.  
DD2672221 041719 Page 2 of 4 Copyright © 2013-2019 Daktronics, Inc.*



**SPORTSOUND  
INDOOR AUDIO SYSTEM**

SSN-150

SUBMITTAL APPROVAL

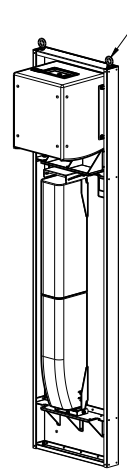
- APPROVED
- APPROVED AS NOTED
- APPROVED AS NOTED & RESUBMIT



COMPANY: \_\_\_\_\_  
 SIGNED: \_\_\_\_\_  
 TITLE: \_\_\_\_\_ DATE: \_\_\_\_\_

NOTES:

- 1.0 GENERAL NOTES
  - 1.1 ALL DIMENSIONS IN FEET AND INCHES. DIMENSIONS ARE APPROXIMATE AND SUBJECT TO CHANGE DUE TO DETAILED DESIGN CONSIDERATIONS.
  - 1.2 TERMINAL BLOCKS FOR LANDING THE SPEAKER WIRES WILL BE PROVIDED WITHIN THE CABINET BY DAKTRONICS.
  - 1.3 HOLES FOR WIRE ENTRY TO BE PUNCHED IN CABINET BY THE ELECTRICAL SUBCONTRACTOR.
  - 1.4 LOCATION OF THE SPEAKER WIRE ENTRANCE HOLES TO BE DETERMINED BY THE CUSTOMER.
- 2.0 STRUCTURAL NOTES
  - 2.1 IT WILL BE THE UNDERSTANDING OF DAKTRONICS THAT SHOP APPROVAL IMPLIES THAT A QUALIFIED ENGINEER HAS REVIEWED THE ADDITION OF THE SPEAKER CABINET LOAD TO THE BUILDING AND THAT THE BUILDING STRUCTURE HAS BEEN DEEMED ACCEPTABLE TO SUPPORT THE ADDITIONAL LOAD AS DETAILED.
  - 2.2 CABINET MATERIAL IS ALL ALUMINUM.
  - 2.3 WEIGHT OF CABINET WITH SPEAKERS: 175 LBS.
  - 2.4 THE BOTTOM OF THE CABINET SHOULD BE MOUNTED NO LESS THAN 15 FT FROM THE GYM FLOOR TO AVOID INTERFERENCE WITH THE BASKETBALL BACKBOARDS.
  - 2.5 INTERNAL SPEAKERS TO BE PROVIDED AND INSTALLED BEFORE THE CABINET ARRIVES ON SITE.
  - 2.6 DAKTRONICS DESIGNED STRUCTURE HARDWARE DOES NOT INCLUDE ANY TENSION CONTROL HARDWARE. TORQUE ON BOLTS TO FOLLOW THE "TURN OF THE NUT METHOD" OF TIGHTENING, UNLESS OTHERWISE NOTED.
- 3.0 PROJECT RESPONSIBILITIES
  - 3.1 ALL ON-SITE WORK TO BE DONE IN ACCORDANCE WITH OSHA AND ALL LOCAL CODES THAT APPLY.
  - 3.2 DAKTRONICS SUBCONTRACTORS RESPONSIBLE FOR JOBSITE SAFETY.
  - 3.3 DAKTRONICS SUBCONTRACTORS ARE SOLELY RESPONSIBLE FOR THE DESIGN AND INSTALLATION OF ALL TEMPORARY BRACING AND OTHER ELEMENTS AND EQUIPMENT NECESSARY FOR A SAFE INSTALLATION.
  - 3.4 EACH SUBCONTRACTOR IS RESPONSIBLE FOR THE REMOVAL AND DISPOSAL OF WASTE MATERIALS ON THE JOBSITE.
  - 3.5 DAKTRONICS AND OWNERS SUBCONTRACTORS SHALL VERIFY ALL EXISTING DIMENSIONS AND CONDITIONS PRIOR TO INSTALLATION. NOTIFY DAKTRONICS IMMEDIATELY IF ANY DISCREPANCIES ARE FOUND.
  - 3.6 REFER TO STANDARD FORM AGREEMENT BETWEEN CONTRACTOR AND SUBCONTRACTOR (AA-A401) AND ATTACHED DOCUMENTS FOR DETAILED SCOPE OF WORK AND RESPONSIBILITY.

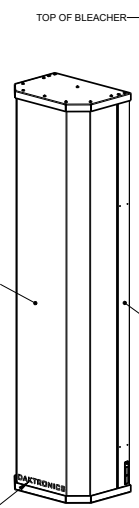


ISOMETRIC VIEW  
(GRILLE REMOVED)

LIFT EYES ARE SUPPLIED FOR INSTALLATION OF THE WALL SECTION.  
 LIFTEYES ARE TO BE REMOVED BEFORE THE FRONT GRILLE IS ATTACHED.

ACOUSTICAL MESH TO BE APPROVED AND PRINTED PER CUSTOMER SPECIFICATIONS.  
 STANDARD DESIGN AND COLOR IS BLACK.

DAKTRONICS LOGO TO BE PRINTED ON MESH OVER TOP OF CUSTOMER GRAPHICS OR COLORS.

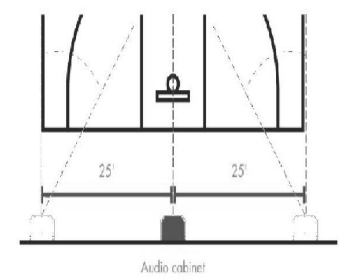
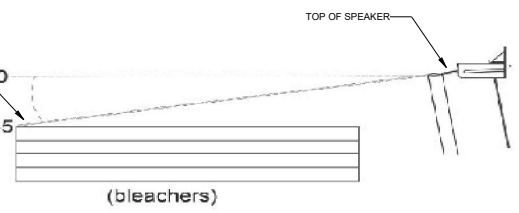


ISOMETRIC VIEW

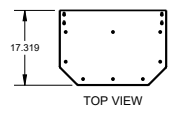
EXPOSED CABINET (SIDE PORTIONS, TOP AND BOTTOM) TO BE PAINTED SEMI-GLOSS BLACK OR CUSTOM COLORED PER THE CUSTOMER'S REQUEST.

NOTE: THIS SPEAKER CAN BE TILTED DOWNWARD OR PANNED SIDE-TO-SIDE DEPENDING ON SPEAKER CABINET LOCATION IN GYMNASIUM WITH RESPECT TO THE SEATING AREAS.  
 TILT THE SPEAKER DOWNWARD SUCH THAT IT AIMS AT THE UPPER MOST SEATS.  
 MAXIMUM DOWNWARD TILT IS 5 DEGREES.  
 MAXIMUM SIDE-TO-SIDE PAN IS 25 DEGREES.  
 USE A 7/16" SOCKET AND WRENCH TO LOOSEN THE HARDWARE FOR SPEAKER AIMING.

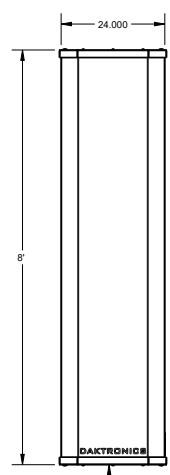
Speaker Aiming



SPEAKER OFFSET DISTANCE FROM CENTERLINE (FT)	LEFT/ RIGHT SPEAKER PAN AMOUNT(DEGREES)
5	0
7.5	0
10	0
12.5	12
15	14
17.5	16
20	18
22.5	21
25	23

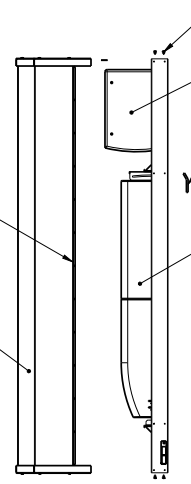


TOP VIEW



15' MINIMUM DISTANCE TO FLOOR

FRONT VIEW



RIGHT SIDE VIEW  
FRONT REMOVAL SHOWN

4 BOLTS ON THE TOP AND BOTTOM HOLD THE FRONT OF THE CABINET TO THE REAR ASSEMBLY.

LOW FREQUENCY SPEAKER.

STEEL CLIP ANGLES TO BE MOUNTED TO THE WALL FOR SUPPORTING THE DEAD LOAD OF THE CABINET.

NOTE: THE ANGLED SIDE OF THE CLIP ANGLE POINTS UPWARD AS SHOWN FOR INSTALLATION. REFER TO DD-2670974 FOR RECOMMENDED ANCHORS.

STANDARD FULL RANGE COLUMN SPEAKER.

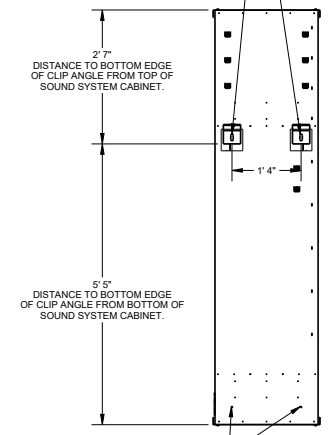
NOTE: THIS SPEAKER CAN BE TILTED DOWNWARD OR PANNED SIDE-TO-SIDE DEPENDING ON SPEAKER CABINET LOCATION IN GYMNASIUM WITH RESPECT TO THE SEATING AREAS.

TILT THE SPEAKER DOWNWARD SUCH THAT IT AIMS AT THE UPPER MOST SEATS.  
 MAXIMUM DOWNWARD TILT IS 5 DEGREES.  
 MAXIMUM SIDE-TO-SIDE PAN IS 25 DEGREES.  
 USE A 7/16" SOCKET AND WRENCH TO LOOSEN THE HARDWARE FOR SPEAKER AIMING.

LARGE STEEL CLIP ANGLES WILL BE ANCHORED TO THE GYMNASIUM WALL WITH 1/2" HARDWARE @ 2 LOCATIONS. THE BACK OF THE SPEAKER CABINET SLIDES OVER AND DOWN ON TO THE CLIP ANGLES FOR MOUNTING.

CLIPS TO BE PROVIDED BY DAKTRONICS. \*\*\*THE ANGLED SIDE OF THE CLIP ANGLE POINTS UPWARD FOR MOUNTING\*\*\*

MOUNTING HARDWARE TO BE PROVIDED BY INSTALLATION SUBCONTRACTOR. CONTRACTOR TO VERIFY WALL TYPE PRIOR TO INSTALLATION.



BOTTOM OF CABINET BOLTS TO WALL MATERIAL @ 2 LOCATIONS TO RESTRICT UPWARD MOVEMENT OF CABINET. ACCESS TO THE INSIDE OF THE CABINET REQUIRED TO INSTALL.

REAR VIEW

02	04 APR 19	ADDED SPEAKER AIMING DETAIL.	MTR
01	03 OCT 18	UPDATED PER FINAL DESIGN	J.R.

THE CONCEPTS EXPRESSED AND DETAILS SHOWN ON THIS DRAWING ARE OURS OR HAVE BEEN REVIEWED BY US AND APPROVED BY US. ANY REVISIONS WITHOUT THE EXPRESS WRITTEN CONSENT OF DAKTRONICS, INC. SHALL BE AT THE USER'S RISK.

**DAKTRONICS**

PROJECT: DAKTRONICS AUDIO SYSTEMS  
 TITLE: SHOP DRAWING, SOUND SYSTEM, SSN-150  
 DATE: 04 APR 19 DIM UNITS: INCHES (MILLIMETERS) SHEET: 1 OF 1 REV: 02  
 SCALE: 1/20 DO NOT SCALE DRAWING  
 DESIGN: JROBERS JOB NO. \_\_\_\_\_ PUNC. TYPE: S21  
 DRAWN: JROBERS P1756 F - 10 - C 1132106

**SPORTSOUND  
INDOOR AUDIO SYSTEM  
SSN-150**

**SUBMITTAL APPROVAL**

APPROVED    APPROVED AS NOTED    APPROVED AS NOTED & RESUBMIT

COMPANY: \_\_\_\_\_

SIGNED: \_\_\_\_\_

TITLE: \_\_\_\_\_      DATE: \_\_\_\_\_

**SPEAKER NOTES:**

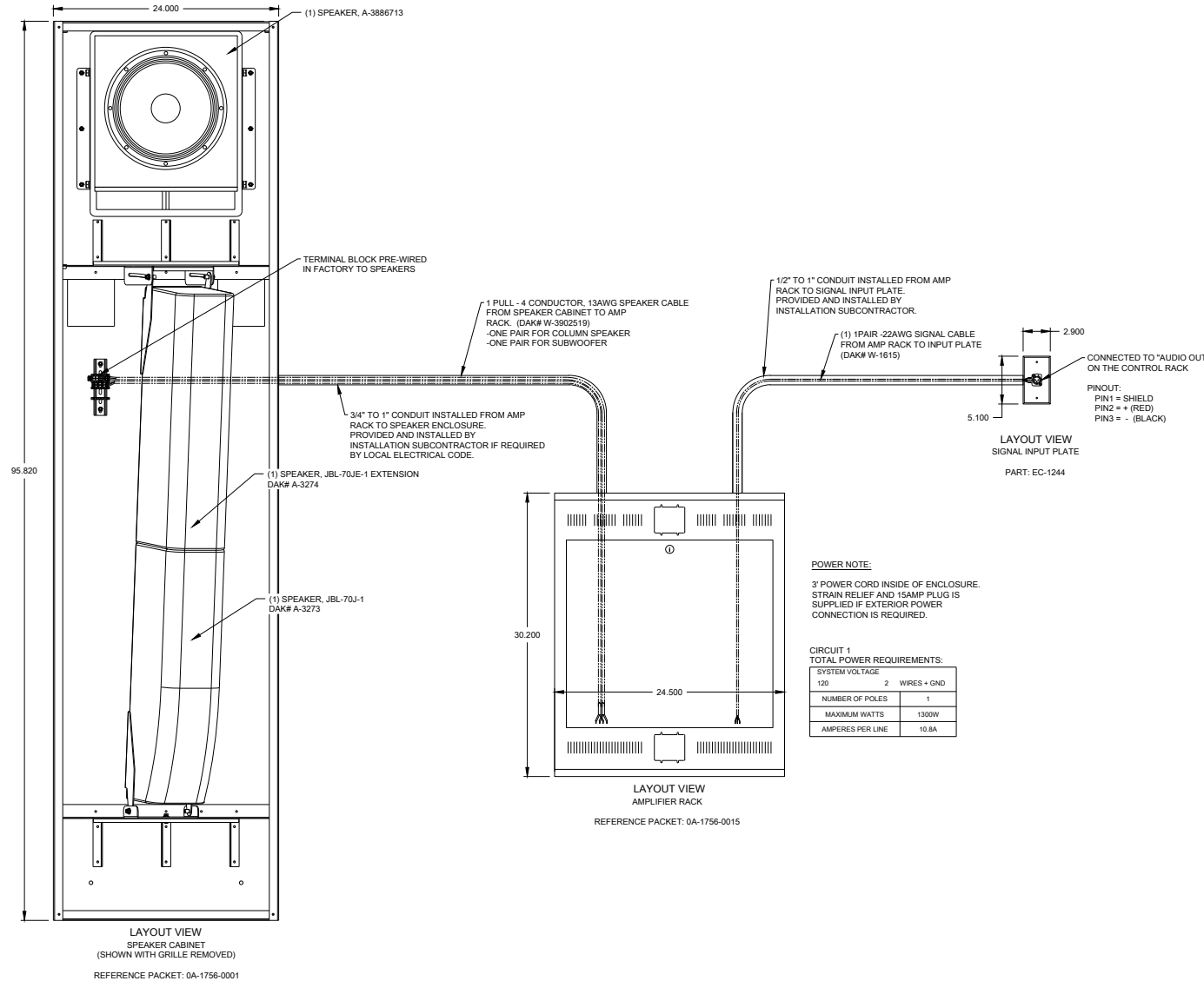
1. SPEAKER ENCLOSURE PROVIDED BY DAKTRONICS AND INSTALLED BY INSTALL SUBCONTRACTOR. FOLLOW DAKTRONICS DRAWING: 1132106 FOR PROPER INSTALLATION PROCEDURE.
2. TERMINAL BLOCK PROVIDED ON BODY OF ENCLOSURE TO TERMINATE SPEAKER CABLE.
3. REMOVE GRILLE FACE TO GAIN ACCESS TO SPEAKER TERMINATION. REFER TO SHOP DRAWING FOR GRILL REMOVAL.
4. DRILL HOLE THROUGH BODY OF ENCLOSURE FOR CONDUIT INSTALLATION.
5. SOME SITES MAY HAVE COLUMN SPEAKER EXPOSED AND NOT INSTALL IN A SPEAKER ENCLOSURE. IF SO, TERMINATION DIRECT TO SPEAKER REQUIRED. FOLLOW MANUFACTURER'S INSTRUCTIONS ON PROPER TERMINATION.

**AMPLIFIER RACK NOTES:**

1. AMPLIFIER TILT-OUT RACK PROVIDED BY DAKTRONICS AND INSTALLED AS SHOWN ON DWG-1152507.
2. SEE DWG-03480030 WIRING DETAILS.
3. KNOCKOUTS ON TOP OF RACK TO ACCEPT VARYING CONDUIT SIZES.

**INPUT PLATE NOTES:**

1. SIGNAL F-XLR INPUT PLATE MOUNTED PER CUSTOMER'S DIRECTION. TYPICALLY MOUNTED TO WALL BOX OR FLOOR BOX IN CLOSE PROXIMITY OF CONTROL LOCATION.
2. INPUT PLATE PROVIDED BY DAKTRONICS AND INSTALLED TO IGANG RECEPTACLE BOX BY INSTALLATION SUBCONTRACTOR. INSTALL SUBCONTRACTOR TO PROVIDE BOX.
3. SEE DRAWING DETAIL OF PLATE AND XLR JACK FOR PINOUT.



**POWER NOTE:**  
3' POWER CORD INSIDE OF ENCLOSURE. STRAIN RELIEF AND 15AMP PLUG IS SUPPLIED IF EXTERIOR POWER CONNECTION IS REQUIRED.

**CIRCUIT 1 TOTAL POWER REQUIREMENTS:**

SYSTEM VOLTAGE	
120	2 WIRES + GND
NUMBER OF POLES	
	1
MAXIMUM WATTS	
	1300W
AMPERES PER LINE	
	10.8A

REV 03	DATE: 25 OCT 18	UPDATE SUBWOOFER PART NUMBER	BY: CJB
REV 02	DATE: 15 MAR 18	UPDATED TRX WIRING FROM PADDED (R 4 1/10) STRAIGHT THROUGH (R 5 1/10) DOWN TO OSC AMPLIFIER CHANGE	BY: CJB
REV 01	DATE: 1 MAY 14	REPLACED TB-1058 AND TB-1075 WITH T-1130	BY: LCP

THE CONCEPTS EXPRESSED AND DETAILS SHOWN ON THIS DRAWING ARE CONFIDENTIAL AND PROPRIETARY. DO NOT REPRODUCE OR ANY MANNER WITHOUT THE EXPRESS WRITTEN CONSENT OF DAKTRONICS, INC. OR ITS SUCCESSOR OR SUBSIDIARIES.

**DAKTRONICS** PROJECT: DAKTRONICS AUDIO SYSTEMS

TITLE: RISER, STANDARD INDOOR SOUND SYSTEM, SSN-150

DATE: 23 JUL 13	DM (INCHES) INCHES (MILLIMETERS)	SHEET 03
SCALE: 1/8"	DO NOT SCALE DRAWING	
DESIGN: DTREML	JOB NO. _____	PLNC: TYR - 521
DRAWN: DTREML	P1756	R - 10, C

**1144831**