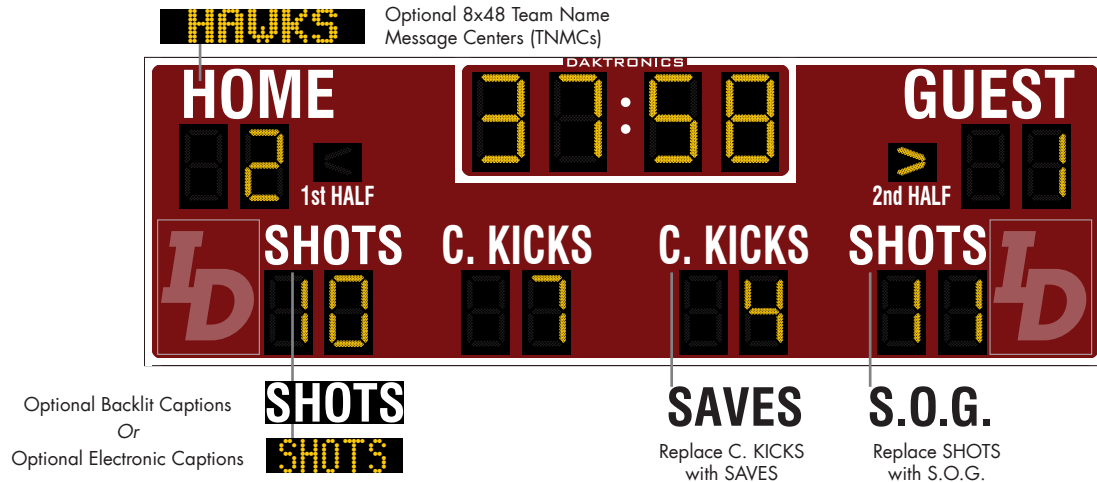


DAKTRONICS SO-2021 PRODUCT SPECIFICATIONS



This outdoor LED soccer scoreboard displays period time to 99:59, HOME and GUEST scores to 99 along with SHOTS (or S.O.G.) and C. KICKS (or SAVES) to 99 for both teams. T.O.L. (time outs left) to nine are optional. Arrows indicate the current HALF. When period time is less than one minute, the scoreboard displays time to 1/10 of a second. Scoreboard shown with optional striping and amber PanaView® digits.

DIMENSIONS	# OF SECTIONS
8'-0" H x 25'-0" W x 8" D (2.44 m, 7.62 m, 203 mm)	Two Total
4'-0" H x 25'-0" W x 8" D (1.22 m, 7.62 m, 203 mm)	One Top & One Bottom

		VINYL CAPTIONS (STANDARD)	TNMCs & VINYL CAPTIONS	TNMCs & ELECTRONIC CAPTIONS	BACKLIT CAPTIONS
POWER (120 VAC)*	Red/Amber Digits	330 Watts, 2.8 Amps	430 Watts, 3.6 Amps	570 Watts, 4.8 Amps	500 Watts, 4.2 Amps
	White Digits	690 Watts, 5.8 Amps	920 Watts, 7.7 Amps	1240 Watts, 10.4 Amps	860 Watts, 7.2 Amps
UNCRATED WEIGHT	Top Section	410 lb (186 kg)	530 lb (240 kg)	530 lb (240 kg)	474 lb (215 kg)
	Bottom Section	410 lb (186 kg)	410 lb (186 kg)	570 lb (259 kg)	490 lb (222 kg)
	Total	820 lb (372 kg)	940 lb (426 kg)	1100 lb (499 kg)	964 lb (437 kg)

*Scoreboard requires a dedicated circuit. Models with 240 VAC power at half the indicated amperage are also offered (International Use Only).

DIGITS & INDICATORS

- Clock digits are 30" (762 mm) high. Optional T.O.L. digits are 18" (457 mm) high. All other digits are 24" (610 mm) high.
- Select red, amber, or white LED digits and indicators.
- Scoreboard features robust weather-sealed digits (see [DD2495646](#)).
- Digits may be dimmed for night viewing.

DISPLAY COLOR

Choose from 150+ colors (from Martin Senour® paint book) at no additional cost.

CONSTRUCTION

Alcoa aluminum alloy 5052 for excellent corrosion resistance

OPERATING TEMPERATURES

- Display: -22° to 122° Fahrenheit (-30° to 50° Celsius)
- Console: 32° to 130° Fahrenheit (0° to 54° Celsius)

CAPTIONS

- HOME and GUEST captions are 15" (381 mm) high. 1st HALF and 2nd HALF captions are 6" (152 mm) high. All other captions are 12" (305 mm) high.
- Standard captions are vinyl, applied to the display face.
- Optional backlit captions consist of white letters on a black background. Team names are 14" (356 mm) high. All other captions are 12" (305 mm) high.
- Optional electronic captions change according to the sport mode, eliminating the need for caption panels. Electronic captions and TNMCs are 10.6" (269 mm) high.

PRODUCT SAFETY APPROVAL

ETL-listed to UL 48, tested to CSA standards, and CE-labeled

WWW.DAKTRONICS.COM E-MAIL: SALES@DAKTRONICS.COM

201 Daktronics Drive, PO Box 5128, Brookings, SD 57006
Phone: 1-800-325-8766 or 605-692-0200 Fax: 605-697-4746
DD2167495 091620 Page 1 of 10



DAKTRONICS SO-2021 PRODUCT SPECIFICATIONS

CONTROL CONSOLE	CONTROL OPTIONS
All Sport® 5000 (see SL-03991)	<p>Wired (standard): One-pair shielded cable of 22 AWG minimum is required. A cover plate with mounted connector and standard 2" x 4" x 2" (51 mm x 102 mm x 51 mm) outlet box is provided. Connector mates with signal cable from control console.</p> <p>Wireless (optional): 2.4 GHz spread spectrum radio features 64 non-interfering channels and 8 broadcast groups (see SL-04370).</p>
DAK Score & MX-1 (see DD3888368)	CUSTOMER-SUPPLIED mobile device or tablet with DAK Score app installed communicates via Bluetooth® wireless technology to an MX-1 Interface Box that controls the scoreboard through 2.4 GHz radio or wired connection.

SEGMENT TIMER MODE

The segment timer mode is ideal for keeping practices on schedule. The horn at the end of a segment allows coaches and athletes to focus on the practice and to listen for the horn when it is time to change drills (see [SL-04004](#)).

TIME OF DAY MODE

This scoreboard features a Time of Day (TOD) mode that allows it to act as a clock when the control console is unplugged or off. Refer to the scoreboard installation manual for instructions on how to enable the Time of Day mode.

MOUNTING

Scoreboard is typically mounted on two vertical beams or poles. Hardware to mount scoreboard on two beams is included; hardware for more beams is at additional cost. Standard mounting uses I-beam clamps. Optional mounting method using angle brackets is also offered; maximum beam width is 12" (305 mm) and maximum beam depth is 22" (559 mm). Refer to attached drawings for more information on mounting methods.

SERVICE ACCESS

Digit panels and electronics are serviced from the front of the scoreboard.

GENERAL INFORMATION

Scoreboard provides scoring capabilities for two teams. 100% solid state electronics are housed in an all aluminum cabinet. Scoreboard is shipped in two sections. Scoreboard power is to be provided on a dedicated circuit to prevent loss of game information due to failure of another component on the circuit. Specifications and pricing are subject to change without notice.

ADVERTISING/IDENTIFICATION PANELS

Backlit & Non-Backlit:

1'-6" H x 25'-0" W (457 mm, 7.62 m)
 2'-0" H x 25'-0" W (610 mm, 7.62 m)
 2'-6" H x 25'-0" W (762 mm, 7.62 m)
 3'-0" H x 25'-0" W (914 mm, 7.62 m)
 4'-0" H x 25'-0" W (1.22 m, 7.62 m)

For additional non-backlit panel sizes, see [SL-03761](#).

OPTIONS & ACCESSORIES

- Scoreboard border striping
- Multiple caption and striping colors (see [DD2101644](#))
- Team name caption in place of HOME *
- Team names on changeable panels **
- Programmable Team Name Message Centers (see [DD1696958](#))
- Backlit team name captions
- Backlit or electronic captions
- T.O.L. digits with captions
- Two 3'-6" (1.07 m) tall x 2'-7.75" (806 mm) wide logo/sponsor panels (not available with T.O.L. digits). Copy is applied to removable panels.
- Baseball, football and lacrosse/field hockey captions on changeable panels
- LED colon
- Horn
- Individual digit protective screens (see [SL-04939](#))
- Protective netting (see [DD2690927](#))
- Optional angle bracket mounting method
- Advertising/identification panels
- Decorative accents
- Electronic message centers and video displays in multiple sizes

* Not available with TNMCs

** Not available with TNMCs or Backlit Team Names

FOR ADDITIONAL INFORMATION

- Installation Specifications: DWG-1183308 (attached)
- Standard I-beam Mounting: DWG-1052565 (attached)
- LVX I-Beam Mounting: DWG-3918361 (attached)
- Optional Pole Mounting: DWG-1048184 (attached)
- Component Locations (Red/Amber Digits): DWG-1096701 (attached)
- Component Locations (White Digits): DWG-3024869 (attached)
- Architectural Specifications: See [SL-10091](#)

The Bluetooth® word mark and logos are registered trademarks owned by the Bluetooth SIG, Inc. and any use of such marks by Daktronics, Inc. is under license.

WWW.DAKTRONICS.COM E-MAIL: SALES@DAKTRONICS.COM

201 Daktronics Drive, PO Box 5128, Brookings, SD 57006
 Phone: 1-800-325-8766 or 605-692-0200 Fax: 605-697-4746
 DD2167495 091620 Page 2 of 10



DAKTRONICS SO-2021 PRODUCT SPECIFICATIONS

ALTERNATE CAPTIONS & SCORING MODES

Display Corner Kicks (default), Saves, or Fouls by selecting a setting in the control console.



Soccer Mode with C. KICKS* –
vinyl, backlit & electronic captions shown
(vinyl HALF captions only)



Soccer Mode with SAVES* –
vinyl, backlit & electronic captions shown
(vinyl HALF captions only)

This caption layout may also be used for
Lacrosse/Field Hockey.

* Vinyl captions are applied
directly to the scoreboard
face and are not changeable.



Soccer Mode with FOULS –
electronic captions only
(vinyl HALF captions only)



Segment Timer Mode



Football Mode with T.O.L. Option –
vinyl, backlit & electronic captions shown
(HALF indicators show possession;
vinyl T.O.L. captions only)



Lacrosse/Field Hockey Mode –
vinyl, backlit & electronic captions shown
(SHOTS & PER displayed with electronic captions)

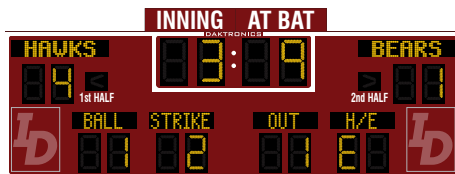
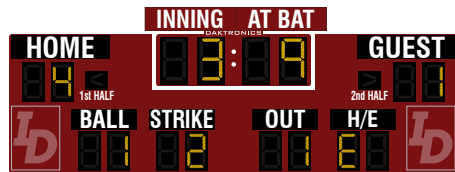
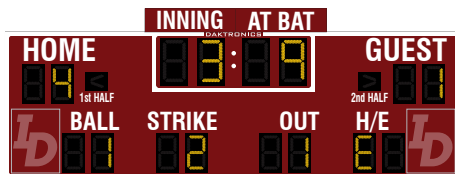


Standalone Time of Day Mode



Soccer Mode –
Optional TNMCs shown

DAKTRONICS SO-2021 PRODUCT SPECIFICATIONS



Baseball Mode, without Clock –
vinyl, backlit & electronic captions shown
(12" vinyl INNING/AT BAT captions only)



Baseball Mode, with Clock –
vinyl, backlit & electronic captions shown
(6" vinyl H/E captions only)

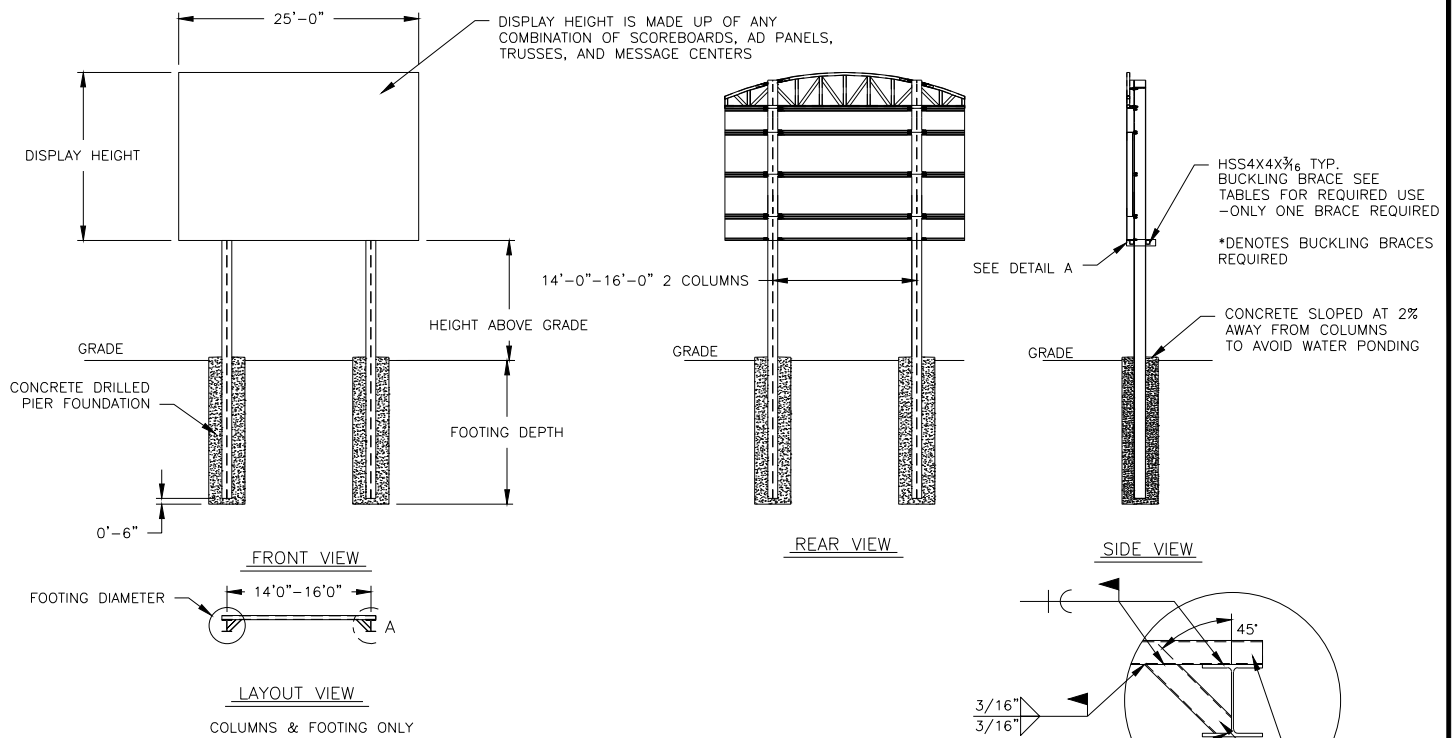


TABLE A - MOUNTING

EXPOSURE B

HEIGHT ABOVE GRADE = 10'						HEIGHT ABOVE GRADE = 15'					
DISPLAY HEIGHT (FT)		DESIGN WIND VELOCITY				DISPLAY HEIGHT (FT)		DESIGN WIND VELOCITY			
		115 MPH	130 MPH	150 MPH	170 MPH			115 MPH	130 MPH	150 MPH	170 MPH
8	COLUMN FOOTING	W8X28 3.0'X8.0'	W8X31 3.0'X9.0'	W14X38 3.0'X10.0'	W12X40 3.0'X11.0'	8	COLUMN FOOTING	W10X39 3.0'X9.0'	W14X43 3.0'X10.0'	W10X49 3.0'X11.0'	W12X58 3.0'X12.0'
10	COLUMN FOOTING	W10X33 3.0'X9.0'	W10X39 3.0'X10.0'	W14X43 3.0'X11.0'	W12X53 3.0'X12.0'	10	COLUMN FOOTING	W10X45 3.0'X10.0'	W12X53 3.0'X11.0'	W12X58 4.0'X11.0'	W16X67 4.0'X13.5'
12	COLUMN FOOTING	W10X39 3.0'X10.0'	W14X43 3.0'X10.5'	W12X53 3.0'X12.0'	W14X61 3.0'X12.0'	12	COLUMN FOOTING	W12X53 3.0'X11.0'	W12X58 3.0'X12.0'	W12X72 3.0'X13.5'	W18X76 3.0'X13.5'
14	COLUMN FOOTING	W14X43 3.0'X10.5'	W12X53 3.0'X11.5'	W12X58 4.0'X11.5'	W16X67 4.0'X13.0'	14*	COLUMN FOOTING	W14X48 3.0'X11.5'	W18X55 3.0'X13.0'	W21X62 4.0'X13.0'	W24X68 4.0'X15.0'
16	COLUMN FOOTING	W12X53 3.0'X11.5'	W14X61 4.0'X11.0'	W12X72 4.0'X12.5'	W18X86 4.0'X14.5'	16*	COLUMN FOOTING	W21X48 4.0'X11.0'	W21X62 4.0'X12.0'	W21X68 4.0'X14.5'	W24X76 4.0'X17.0'
18*	COLUMN FOOTING	W16X40 3.0'X12.0'	W21X48 4.0'X12.0'	W21X55 4.0'X14.0'	W21X68 4.0'X16.0'	18*	COLUMN FOOTING	W21X55 4.0'X12.0'	W16X67 3.0'X16.0'	W18X76 4.0'X16.0'	W27X84 4.0'X18.5'
20*	COLUMN FOOTING	W14X48 3.0'X13.0'	W18X55 3.0'X15.0'	W21X62 4.0'X15.0'	W24X68 4.0'X18.0'	20*	COLUMN FOOTING	W21X62 4.0'X12.5'	W24X68 4.0'X14.5'	W24X84 4.0'X17.5'	W30X90 5.0'X17.5'

FOOTING DIMENSIONS = DIAMETER X DEPTH

* DENOTES ADDITIONAL BRACES REQUIRED AT THE MID HEIGHT OF DISPLAY

EXPOSURE C

HEIGHT ABOVE GRADE = 10'				HEIGHT ABOVE GRADE = 15'			
DISPLAY HEIGHT (FT)		DESIGN WIND VELOCITY		DISPLAY HEIGHT (FT)		DESIGN WIND VELOCITY	
		115 MPH	140 MPH			115 MPH	140 MPH
8	COLUMN FOOTING	W10X33 3.0'X9.5'	W12X40 3.0'X10.5'	8	COLUMN FOOTING	W14X43 3.0'X10.0'	W12X58 3.0'X12.0'
10	COLUMN FOOTING	W14X43 3.0'X10.5'	W12X53 3.0'X11.5'	10	COLUMN FOOTING	W12X53 3.0'X11.5'	W12X65 3.0'X13.5'
12	COLUMN FOOTING	W14X48 3.0'X11.5'	W12X58 4.0'X11.5'	12	COLUMN FOOTING	W14X61 4.0'X12.0'	W18X76 4.0'X13.0'
14	COLUMN FOOTING	W12X53 4.0'X11.0'	W16X67 4.0'X13.0'	14*	COLUMN FOOTING	W21X48 4.0'X12.0'	W21X68 4.0'X14.5'
16	COLUMN FOOTING	W12X65 4.0'X11.5'	W18X76 4.0'X14.0'	16*	COLUMN FOOTING	W21X62 4.0'X13.0'	W18X76 4.0'X16.0'
18*	COLUMN FOOTING	W21X48 4.0'X12.5'	W21X62 4.0'X15.5'	18*	COLUMN FOOTING	W21X68 4.0'X14.0'	W24X84 4.0'X18.0'
20*	COLUMN FOOTING	W21X55 4.0'X13.5'	W21X68 4.0'X17.0'	20*	COLUMN FOOTING	W18X76 4.0'X15.5'	W30X90 5.0'X17.0'

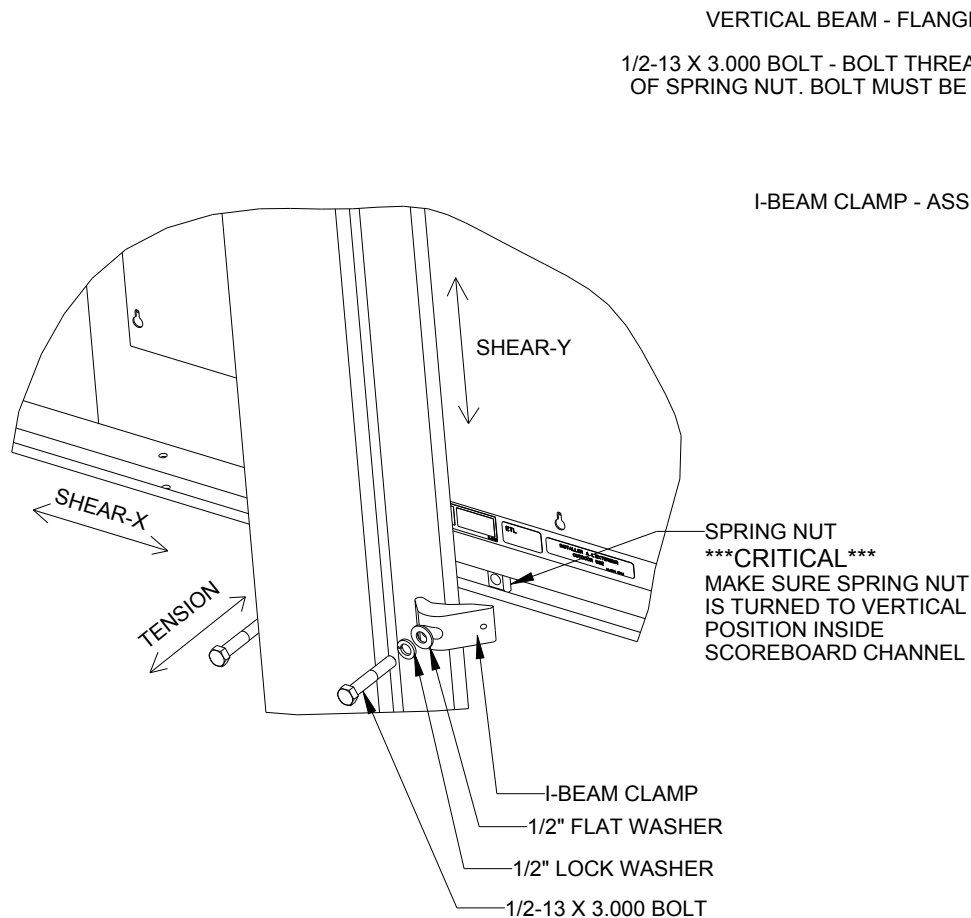
FOOTING DIMENSIONS = DIAMETER X DEPTH

* DENOTES ADDITIONAL BRACES REQUIRED AT THE MID HEIGHT OF DISPLAY

NOTES:

1. FOOTING AND COLUMN SIZES ARE SUGGESTIONS ONLY, PROVIDED TO ASSIST WITH ESTIMATING INSTALLATION COSTS AND ARE NOT INTENDED FOR CONSTRUCTION PURPOSES. THE DESIGN MUST BE CERTIFIED BY A PROFESSIONAL ENGINEER LICENSED IN THE STATE OF THE INSTALLATION BEFORE THEY CAN BE USED FOR FABRICATION OR ERECTION.
2. INTERNATIONAL BUILDING CODE 2012 USED IN DESIGN OF COLUMNS AND FOOTINGS WITH IMPORTANCE FACTOR=1, Kzt=1.0, Kd=0.85, G=0.85. SEISMIC DESIGN WAS NOT CONSIDERED.
3. FOOTING DIMENSIONS ARE BASED ON ASSUMED SOIL CLASS 4 (ALLOWABLE LATERAL BEARING PRESSURE OF 150 psf).
4. STRUCTURAL STEEL IS GRADE A992 (50 ksi) STEEL. CONCRETE SHALL HAVE A MINIMUM 28 DAY COMPRESSIVE STRENGTH OF 2500 psi.
5. THE AVERAGE DISPLAY WEIGHT FOR A LAYOUT CAN NOT EXCEED 8 PSF.
6. DAKTRONICS INC. IS NOT RESPONSIBLE FOR STRUCTURES DESIGNED AND INSTALLED BY OTHERS.
7. LOCAL BUILDING OFFICIALS SHOULD BE CONTACTED TO DETERMINE THE WIND SPEED AND EXPOSURE CATEGORY FOR THE PROPOSED SIGN LOCATION. THE EXPOSURE CATEGORY C IS DEFINED AS:
EXPOSURE B - URBAN AND SUBURBAN AREAS, OR OTHER TERRAIN WITH NUMEROUS SPACED OBSTRUCTIONS HAVING THE SIZE OF SINGLE-FAMILY DWELLINGS OR LARGER. THESE CONDITIONS MUST PREVAIL FOR A DISTANCE FROM THE SIGN OF AT LEAST 2,600 FT OR 20 TIMES THE SIGN HEIGHT, WHICHEVER IS GREATER
EXPOSURE C - OPEN TERRAIN WITH SCATTERED OBSTRUCTIONS HAVING HEIGHTS GENERALLY LESS THAN 30 FT. THIS CATEGORY INCLUDES FLAT OPEN COUNTRY, GRASSLANDS, AND ALL WATER SURFACES IN HURRICANE PRONE REGIONS.
8. FOR SPECIFIC PRODUCT DETAILS ON WEIGHT, MOUNTING, ETC. REFER TO THE INDIVIDUAL PRODUCT SPECIFICATION SHEETS.

<p>DAKTRONICS, INC. BROOKINGS, SD 57006</p>		<p>THE CONCEPTS EXPRESSED AND DETAILS SHOWN ON THIS DRAWING ARE CONFIDENTIAL AND PROPRIETARY. DO NOT REPRODUCE BY ANY MEANS WITHOUT THE EXPRESS WRITTEN CONSENT OF DAKTRONICS, INC. COPYRIGHT 2014 DAKTRONICS, INC.</p>	
		DO NOT SCALE DRAWING	
<p>PROJ: OUTDOOR SCOREBOARD INSTALLATION</p>			
<p>TITLE: 25' WIDTH SCOREBOARD INSTALLATION SPECS.</p>			
<p>DESIGN: TTASCHN</p>		<p>DRAWN: TTASCHN</p>	
<p>SCALE: 1/16" = 1'</p>		<p>DATE: 22JUL14</p>	
SHEET	REV	JOB NO:	FUNC-TYPE-SIZE
	00	P1538	E-10-A
			1183308



EXPLODED REAR ISOMETRIC VIEW

STANDARD MOUNTING METHOD

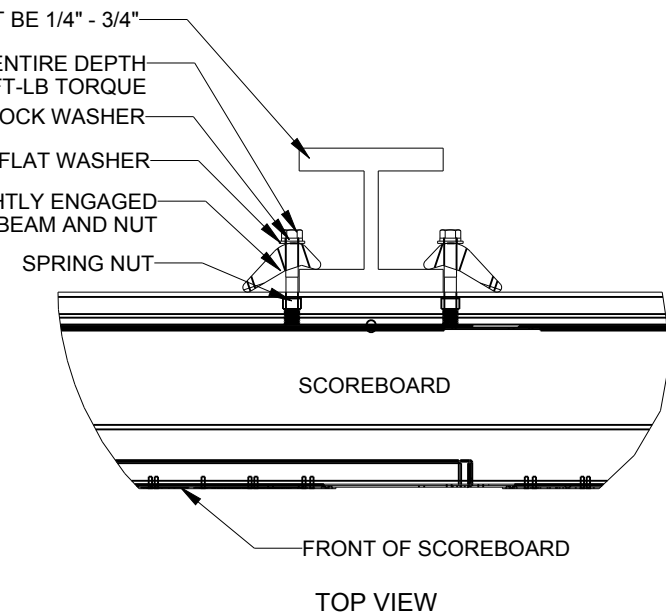
MOUNTING INSTRUCTIONS:

1. PLACE SPRING NUTS INTO SCOREBOARD CHANNEL IN APPROXIMATE LOCATION OF VERTICAL BEAMS
2. LIFT SCOREBOARD INTO POSITION
3. MAKE SURE THE 1/2-13 BOLTS ARE AS CLOSE TO THE I-BEAM FLANGES AS POSSIBLE
4. WHEN SCOREBOARD IS ADJUSTED TO FINAL DESIRED POSITION, TIGHTEN BOLTS FIRMLY
5. IF FLANGE THICKNESS IS MORE THAN 3/4" THICK LONGER BOLTS WILL BE REQUIRED AT THE CUSTOMER'S EXPENSE.


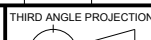
STRUCTURAL NOTES

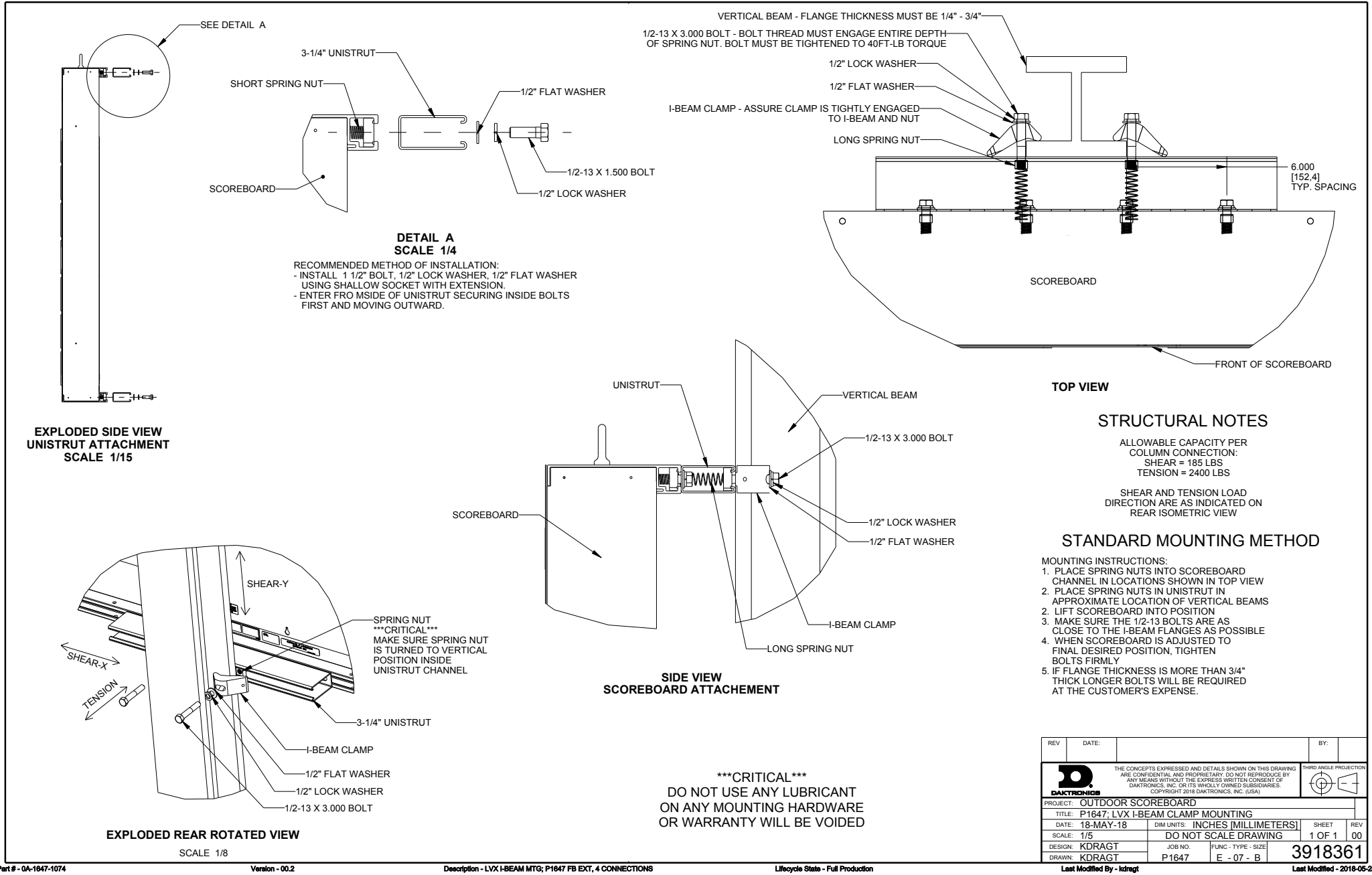
ALLOWABLE CAPACITY PER EACH CLAMP:
SHEAR = 160 LBS
TENSION = 2300 LBS

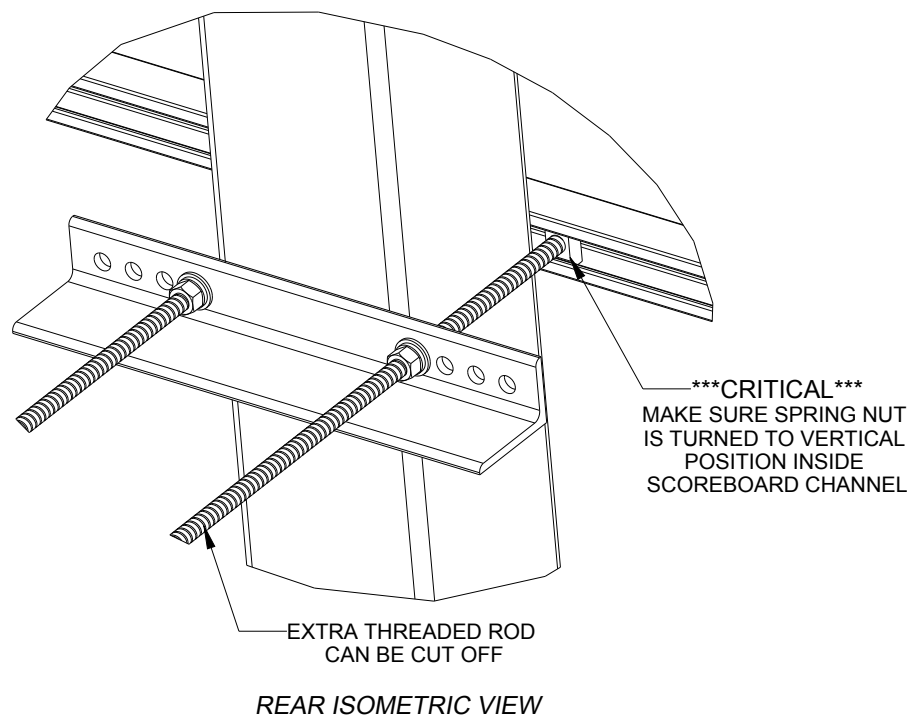
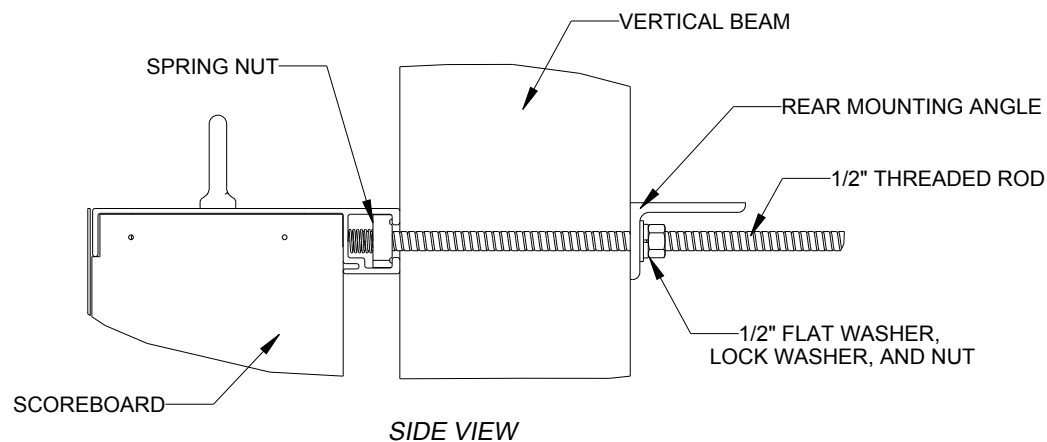
SHEAR AND TENSION LOAD
DIRECTION ARE AS INDICATED ON
REAR ISOMETRIC VIEW



05	22 DEC 15	PER EC-22871; ADDED LUBRICANT NOTE	PJS 18704
04	06 JAN 14	ADDED ALLOWABLE TENSION AND SHEAR CAPACITY DETAILS	JAVA
03	23 OCT 13	PER EC-12382; CHANGED BOLT TORQUE FROM 30 FT-LB TO 40 FT-LB	NJM
02	07 MAR 12	ADDED STANDARD MOUNTING METHODS NOTES	KDD
01	21 FEB 12	CHANGED ROCKER TO I-BEAM	KDD
REV	DATE:		BY:

		<small>THE CONCEPTS EXPRESSED AND DETAILS SHOWN ON THIS DRAWING ARE CONFIDENTIAL AND PROPRIETARY. DO NOT REPRODUCE BY ANY MEANS WITHOUT THE EXPRESS WRITTEN CONSENT OF DAKTRONICS, INC. OR ITS WHOLLY OWNED SUBSIDIARIES. COPYRIGHT 2016 DAKTRONICS, INC. (USA)</small>				
PROJECT: OUTDOOR SCOREBOARD						
TITLE: P1647; I-BEAM CLAMP MOUNTING						
DATE: 22-DEC-15		DIM UNITS: INCHES [MILLIMETERS]		SHEET		REV
SCALE: 1/8		DO NOT SCALE DRAWING		1 OF 1		
DESIGN: MCARSRU		JOB NO.		FUNC - TYPE - SIZE		
DRAWN: MCARSRU		P1647		E - 07 - A		1052565

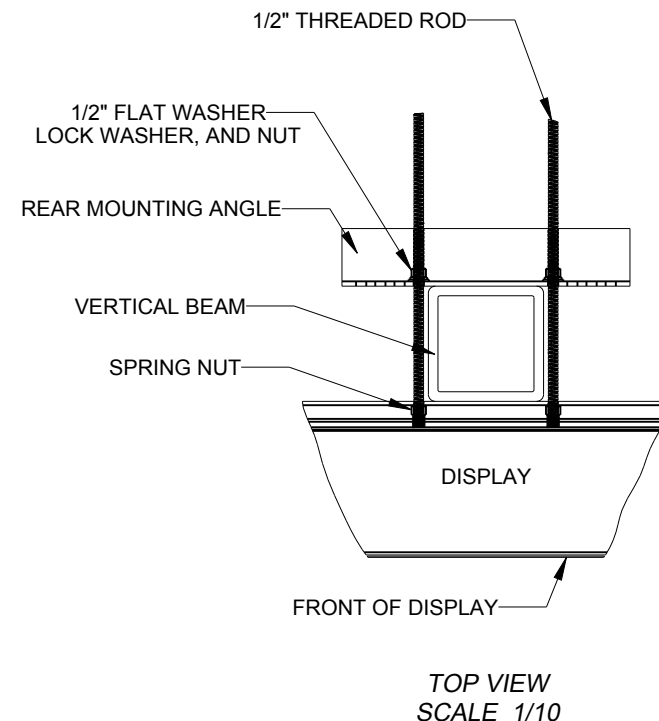




STRUCTURAL NOTES:
- BOLT TORQUE: 30 FT-LB

NOTES:

- THREADED RODS RUN ALONG BOTH SIDES OF BEAM
- RODS DO NOT PASS THROUGH THE FLANGES OF THE BEAM
- NO DRILLING NECESSARY
- MAKE SURE SPRING NUT IS PERPENDICULAR TO CHANNEL OPENING ON SCOREBOARD

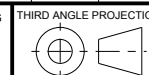


*****CRITICAL*****
DO NOT USE ANY LUBRICANT
ON ANY MOUNTING HARDWARE
OR WARRANTY WILL BE VOIDED

04	22 DEC 15	PER EC-22871; ADDED LUBRICANT WARNING	PJS 18704	
03	03 JULY 13	ADDED STRUCTURAL NOTE	TTF	
02	20 SEP 12	PER EC-7114; REMOVED CHAMFER FROM 0M-133259	LMG	
01	06 OCT 11	REPLACED VERTICAL I-BEAM WITH 6" X 6" SQUARE TUBE	JAVA	
REV	DATE:		BY:	



THE CONCEPTS EXPRESSED AND DETAILS SHOWN ON THIS DRAWING ARE CONFIDENTIAL AND PROPRIETARY. DO NOT REPRODUCE BY ANY MEANS WITHOUT THE EXPRESS WRITTEN CONSENT OF DAKTRONICS, INC. OR ITS WHOLLY OWNED SUBSIDIARIES. COPYRIGHT 2016 DAKTRONICS, INC. (USA)

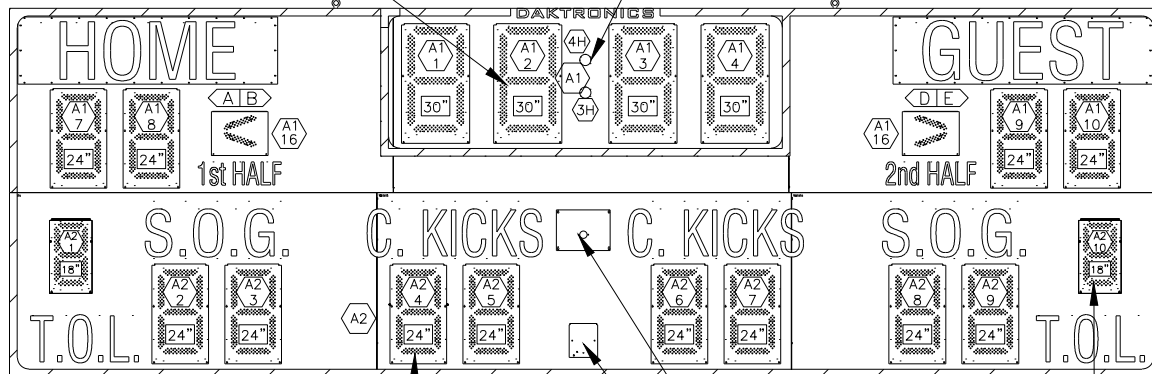


PROJECT: OUTDOOR SCOREBOARDS				
TITLE: P1647; POLE MOUNTING OPTIONS				
DATE: 22-DEC-15	DIM UNITS: INCHES [MILLIMETERS]		SHEET	REV
SCALE: 1/5	DO NOT SCALE DRAWING		1 OF 1	04
DESIGN: DOPPELT	JOB NO.	FUNC - TYPE - SIZE	1048184	
DRAWN: DOPPELT	P1647	E - 10 - A		

SO-2021-R/A

SECONDARY DRIVER (A1)

OPTIONAL 2" LED COLONS



PRIMARY DRIVER (A2)
(KNOCKOUTS FOR 1/2" CONDUIT)
SIGNAL OPTION ON THIS DRIVER
(WIRE, FIBER, OR RADIO)

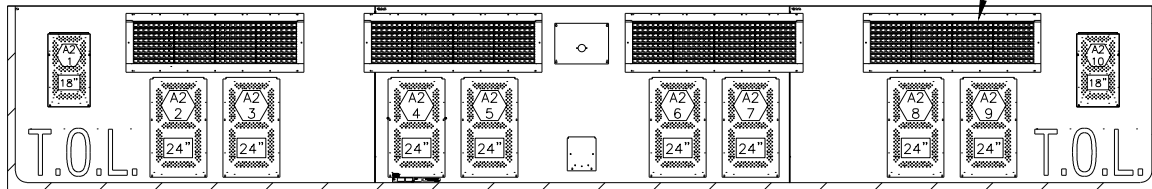
OPTIONAL HORN

OPTIONAL RADIO

OPTIONAL T.O.L.
DIGITS

FRONT VIEW
TOP/BTM SHOWN WITH VINYL CAPTIONS

OPTIONAL BACKLIT CAPTIONS



FRONT VIEW
BTM SHOWN WITH 8X32-34mm
ELECTRONIC CAPTIONS AND VINYL TOL

NOTES:

= LED DRIVER NUMBER &
LED DRIVER CONNECTOR
WIRED TO THAT DIGIT.

= DIGIT SIZE

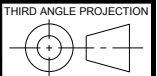
= SEGMENT DESIGNATIONS

= DRIVER NUMBER

REV 05	DATE: 12 AUG 20	PER CN-107975 REMOVED LABELS TO MOVE TO NEW STANDARD	BY: TAN
REV 04	DATE: 08 JAN 19	PER CN-70698, UPDATED LOCATION OF DAKTRONICS LOGO	BY: KDM
REV 03	DATE: 25 MAR 15	PER EC-17119, REMOVED DETAIL VIEWS, CHANGED MASTER/SLAVE TO PRIMARY/SECONDARY	BY: ZSW
REV 02	DATE: 05 JUN 14	PER EC-14666 ADDED OPTION TOL DIGITS AND CAPTIONS, ALONG WITH DIGIT DESIGNATIONS	BY: NJM
REV 01	DATE: 24 APR 13	PER EC-9747, UPDATED SO INDICATORS	BY: KDD

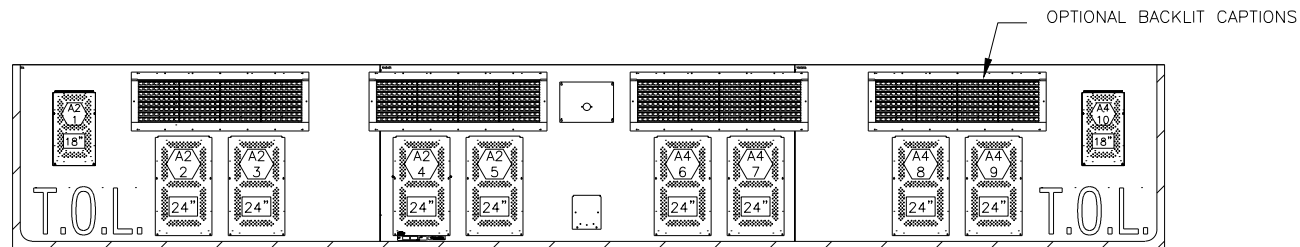
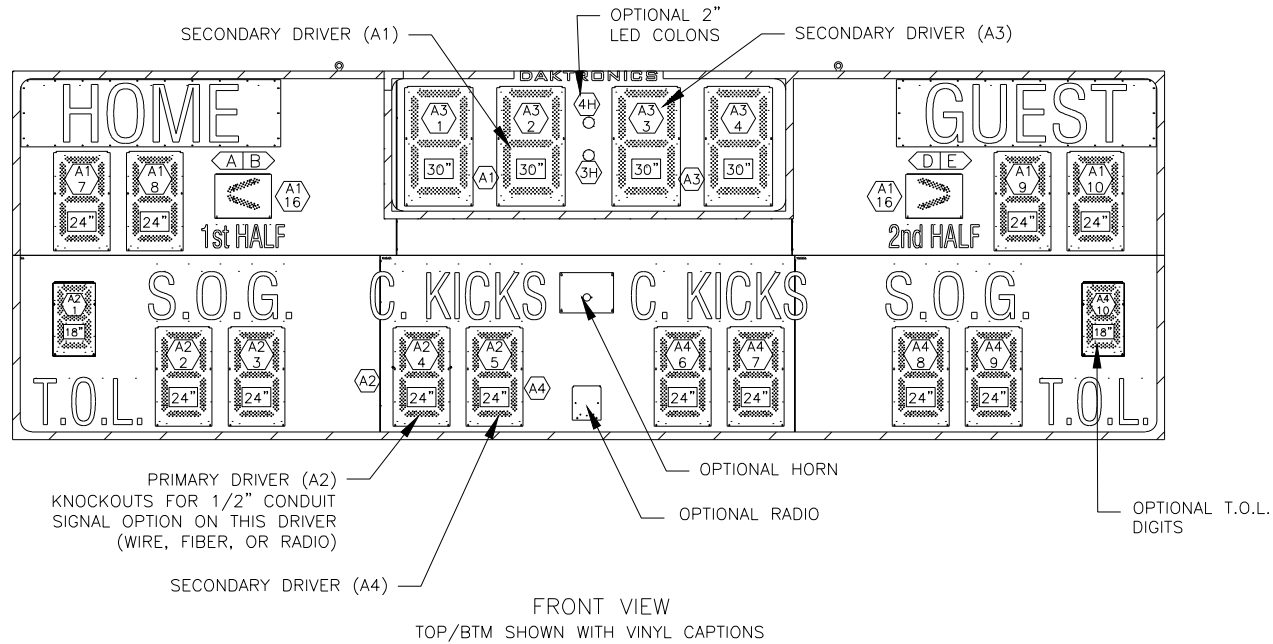


THE CONCEPTS EXPRESSED AND DETAILS SHOWN ON THIS DRAWING ARE CONFIDENTIAL AND PROPRIETARY. DO NOT REPRODUCE BY ANY MEANS WITHOUT THE EXPRESS WRITTEN CONSENT OF DAKTRONICS, INC. OR ITS WHOLLY OWNED SUBSIDIARIES. COPYRIGHT 2018 DAKTRONICS, INC. (USA)



PROJECT: OUTDOOR SCOREBOARDS			
TITLE: COMP LOCATION; SO-2021-201X-R/A			
DATE: 9 MAY 12	DIM UNITS: INCHES [MILLIMETERS]		SHEET 1/1
SCALE: 1=50	DO NOT SCALE DRAWING		REV 05
DESIGN: DOPPELT	JOB NO. P1647	FUNC - TYPE - SIZE R - 08 - A	1096701
DRAWN: ZRYKHUS			

SO-2021-W




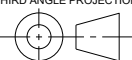
NOTES:

= LED DRIVER NUMBER &
LED DRIVER CONNECTOR
WIRED TO THAT DIGIT.

= DIGIT SIZE

= SEGMENT DESIGNATIONS

= DRIVER NUMBER

REV 02	DATE: 20 AUG 20	PER CN-108381 REMOVED LABELS TO MOVE TO NEW STANDARD	BY: TAN	
REV 01	DATE: 08 JAN 19	PER CN-70698, UPDATED LOCATION OF DAKTRONICS LOGO	BY: KDM	
<div><p>THE CONCEPTS EXPRESSED AND DETAILS SHOWN ON THIS DRAWING ARE CONFIDENTIAL AND PROPRIETARY. DO NOT REPRODUCE BY ANY MEANS WITHOUT THE EXPRESS WRITTEN CONSENT OF DAKTRONICS, INC. OR ITS WHOLLY OWNED SUBSIDIARIES. COPYRIGHT 2018 DAKTRONICS, INC. (USA)</p></div>			<div><p>THIRD ANGLE PROJECTION</p></div>	
PROJECT: OUTDOOR SCOREBOARDS				
TITLE: COMP LOCATION; SO-2021-201X-W				
DATE: 20 MAR 15		DIM UNITS: INCHES [MILLIMETERS]		SHEET 1/1
SCALE: 1=50		DO NOT SCALE DRAWING		REV 02
DESIGN: DOPPELT		JOB NO. P1647		3024869
DRAWN: ZWOODWA		FUNC - TYPE - SIZE R - 08 - A		